

# DISABLED IN HISTORICAL CITY CENTRES THE CASE OF CRACOW

## Tourist route for the visually impaired people

LOCUS – ÉVORA 2009

DR HAB. ING. ARCH.  
HANNA GRABOWSKA-PALECKA  
FACULTY OF ARCHITECTURE  
CRACOW UNIVERSITY OF  
TECHNOLOGY - CUT  
POLAND

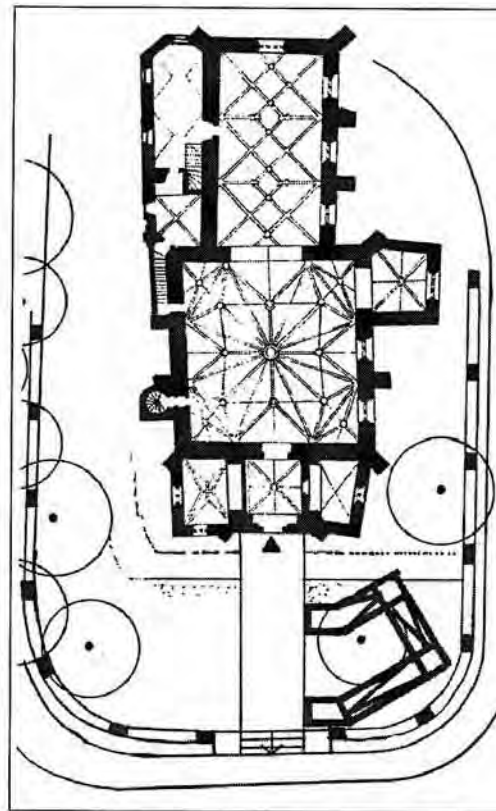


## The Language of Disability

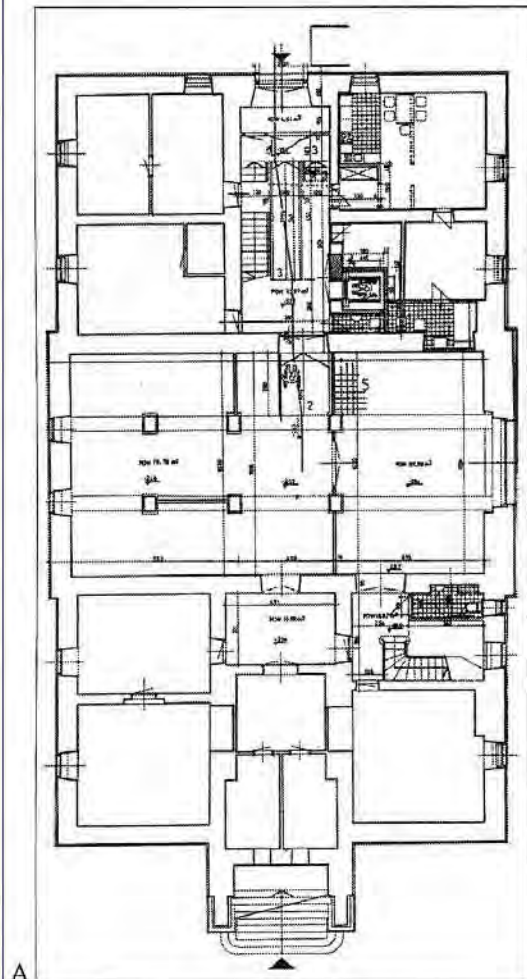
Words that disabled people find acceptable	Words that disabled people find unacceptable
A disabled person	The disabled
A dyslexic person	A dyslexic
A person who has Epilepsy	An epileptic
A person who has a learning disability	A person who is mentally handicapped
A wheelchair user	Wheelchair bound / confined to a wheelchair
A person who is deaf hearing impaired	The deaf
A person who is deaf without speech	Deaf and dumb
A person who is blind/visually impaired	The blind
A non-disabled person	An able-bodied person
A person with mental health difficulties	A person who is mentally ill
An accessible toilet	A disabled toilet

**According to:  
„Disabled Student Support”,  
Sheffield Hallam University,  
3.10.2003**













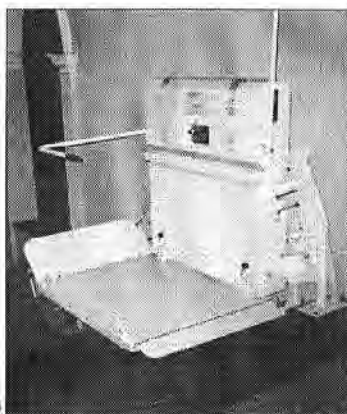
A



B



C



D



E





A



B



C



D



E





B



D







**KRAKÓW -  
HISTORICAL  
CITY CENTRE**





KRAKÓW: A - granice obszaru badawczego wraz z najbliższymi sąsiadującymi terenami, B - Krakowskiego Centrum Komunikacyjnego, tzw. Nowego Miasta oraz C - obszarem ścisłego Śródmieścia w obrębie II obwodnicy





CRACOW – CITY CENTER - ROUTE FOR VISUALLY IMPAIRED PEOPLE





**CRACOW – OLD CITY  
BEGINNING OF THE ROUTE  
FOR VISUALLY  
IMPAIRED PEOPLE**

















**ST. FLORIAN'S GATE**





CRACOW'S FORTIFICATIONS

















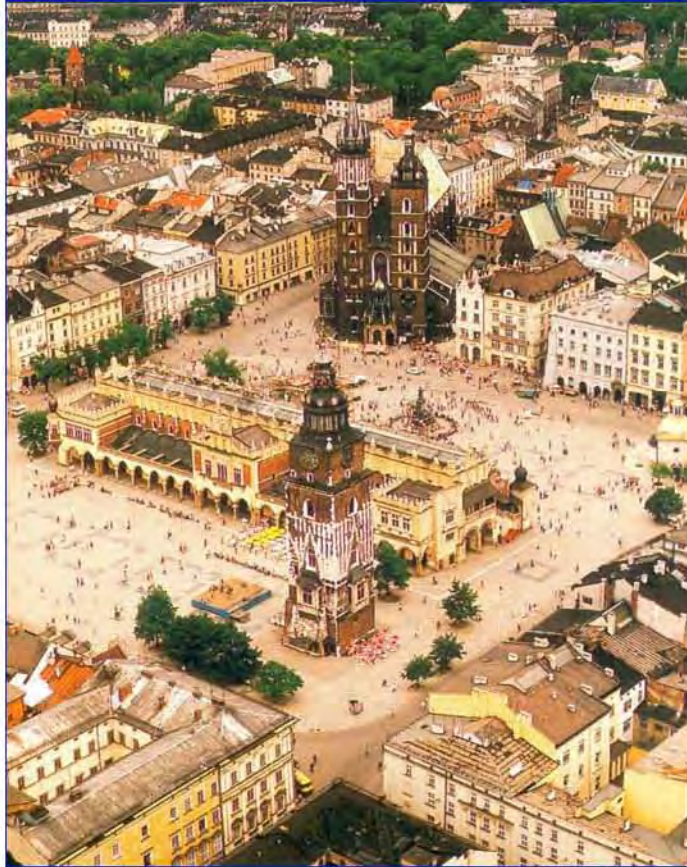








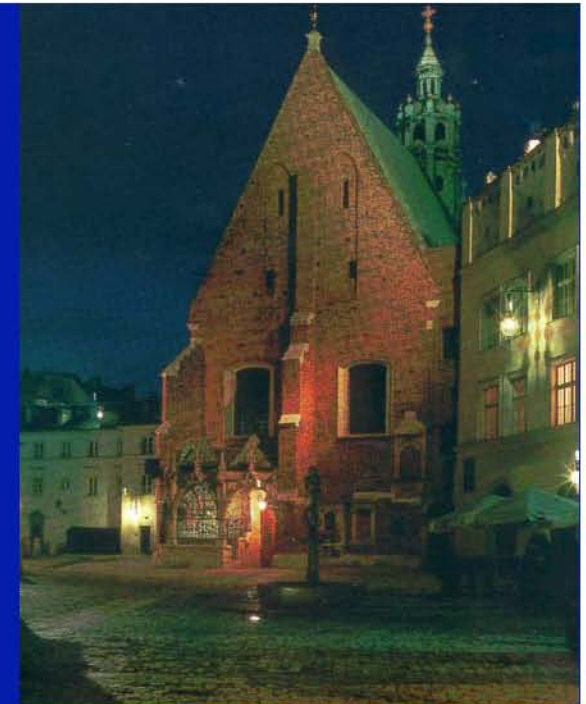




**KRAKÓW -  
MAIN MARKET SQUARE  
(200 m x 200 m)**







**KRAKÓW -  
MAIN MARKET SQUARE  
BY NIGHT**







**CRACOW – ST. MARY'S  
ALTARPIECE  
(VEIT STOSS c.a.1447 – 1533)**





















XII W. KOŚCIOŁ WSZYSTKICH  
SAINTS STOOD FROM THE 12



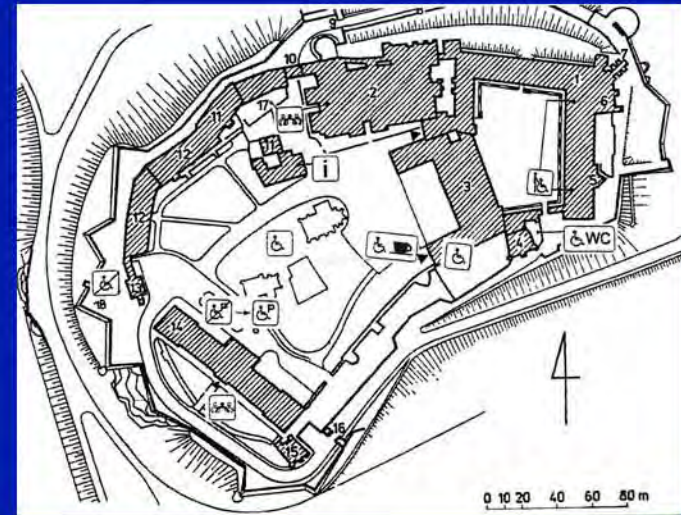
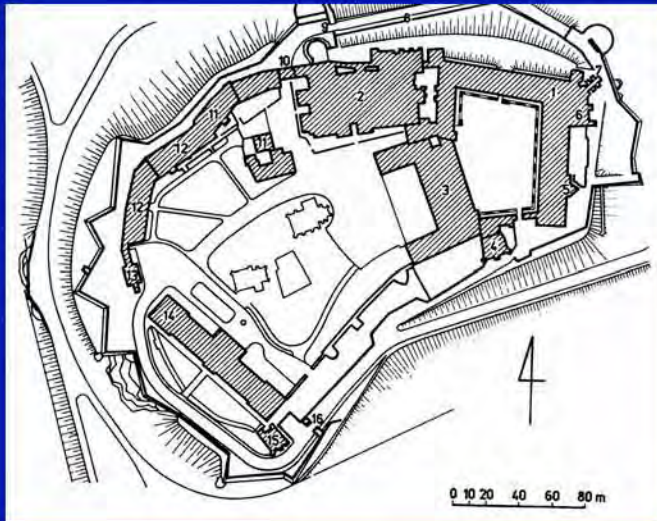






**KRAKÓW – ECOLOGICAL TRANSPORT IN HISTORICAL CENTER**





**THE WAWEL HILL  
WITH  
THE ROYAL CASTLE**

















**THE WAWEL CATHEDRAL AND  
THE ROYAL CASTLE ON THE WAWEL HILL**













The famous French philosopher Franoise Diderot, in evaluating the human senses, writes:

***„ I found that of the senses the eye is the most superficial,  
the ear the most arrogant,  
smell the most voluptuous,  
taste the most superstitious and fickle,  
touch the most profound and philosophical...”***

***(„Museums Without Barriers. A new deal for disabled people”, Editor in chief: Adrew Wheatcroft, Fondation de France, ICOM, London and New York, 1991, p. 144)***